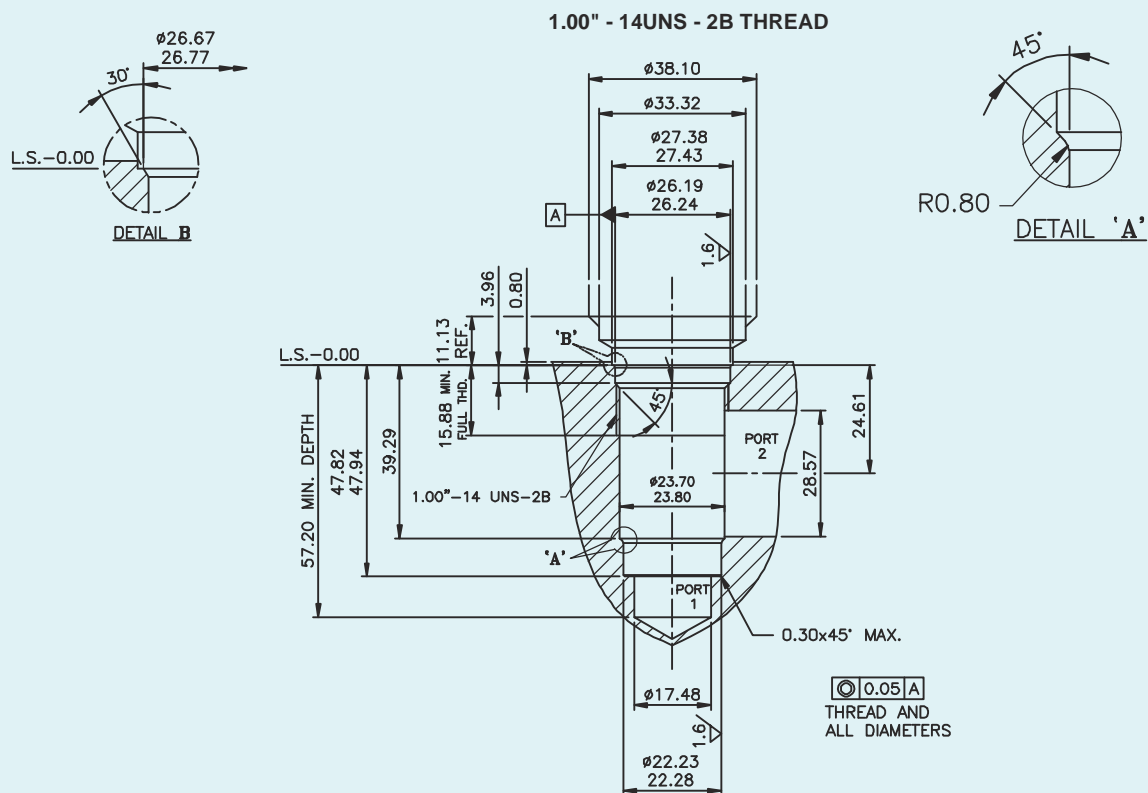
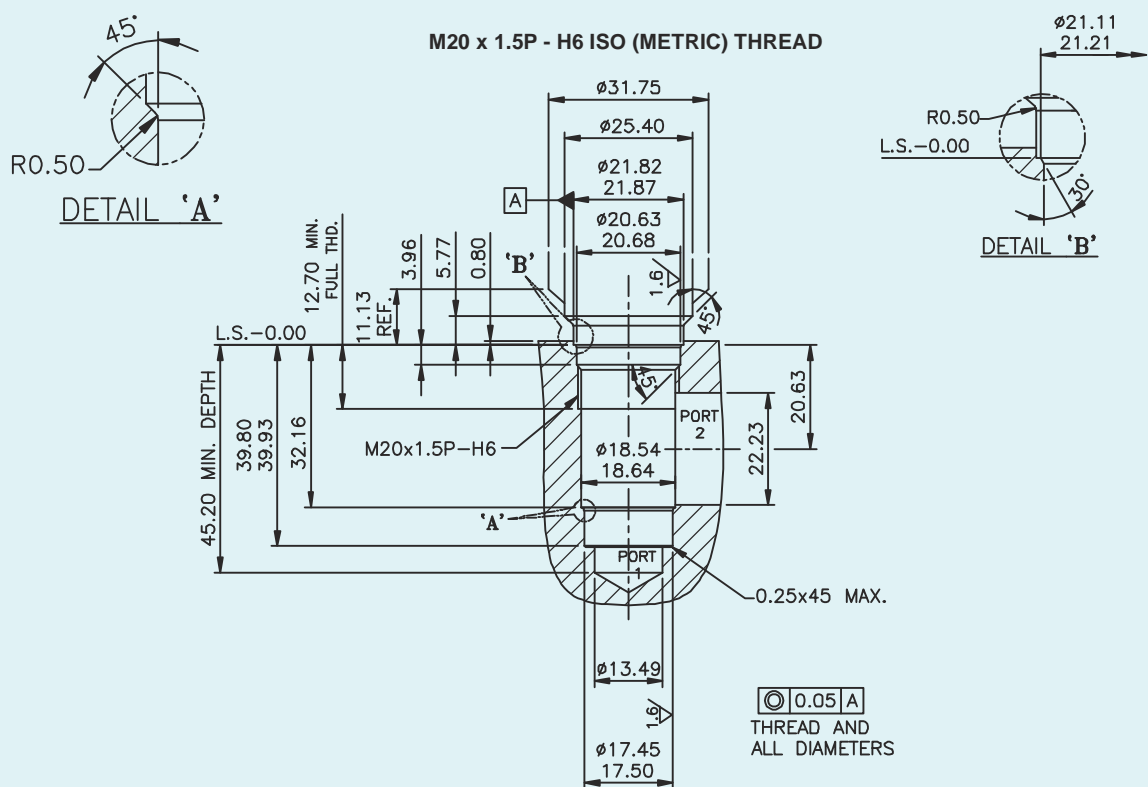


## CV-226 CAVITY DETAIL



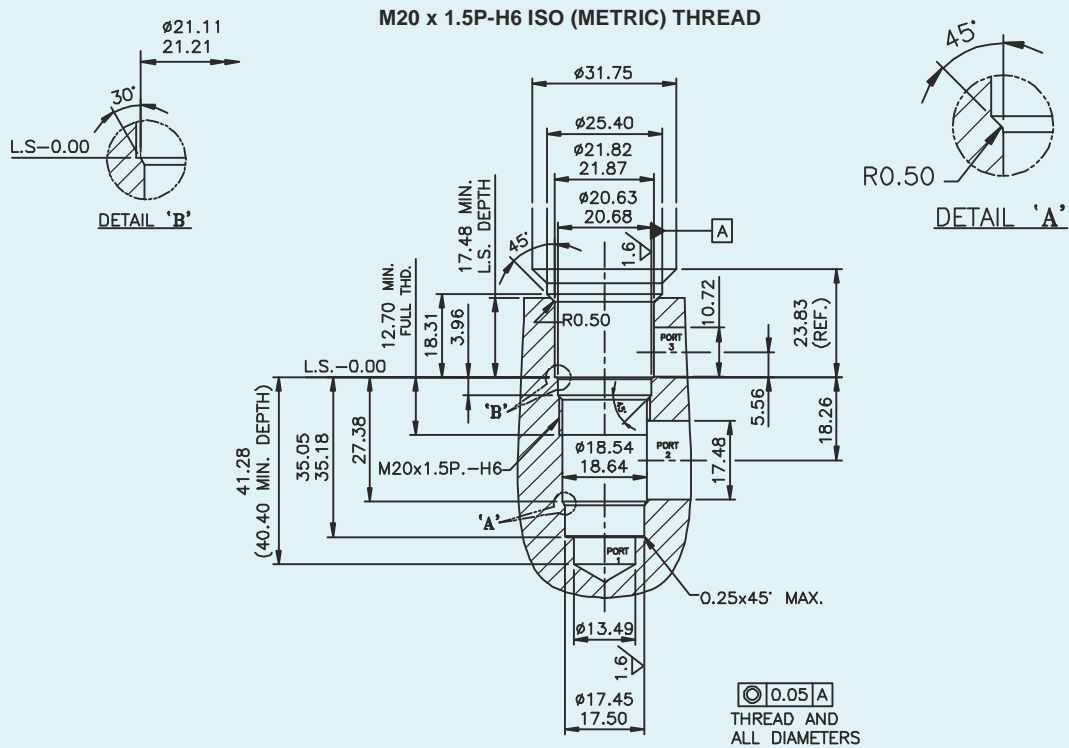
NOTE :- DEGREE 30° & 45° SHOULD BE SMOOTH & FREE OF NICKS AND SHARP EDGES.

## CV-227 CAVITY DETAIL

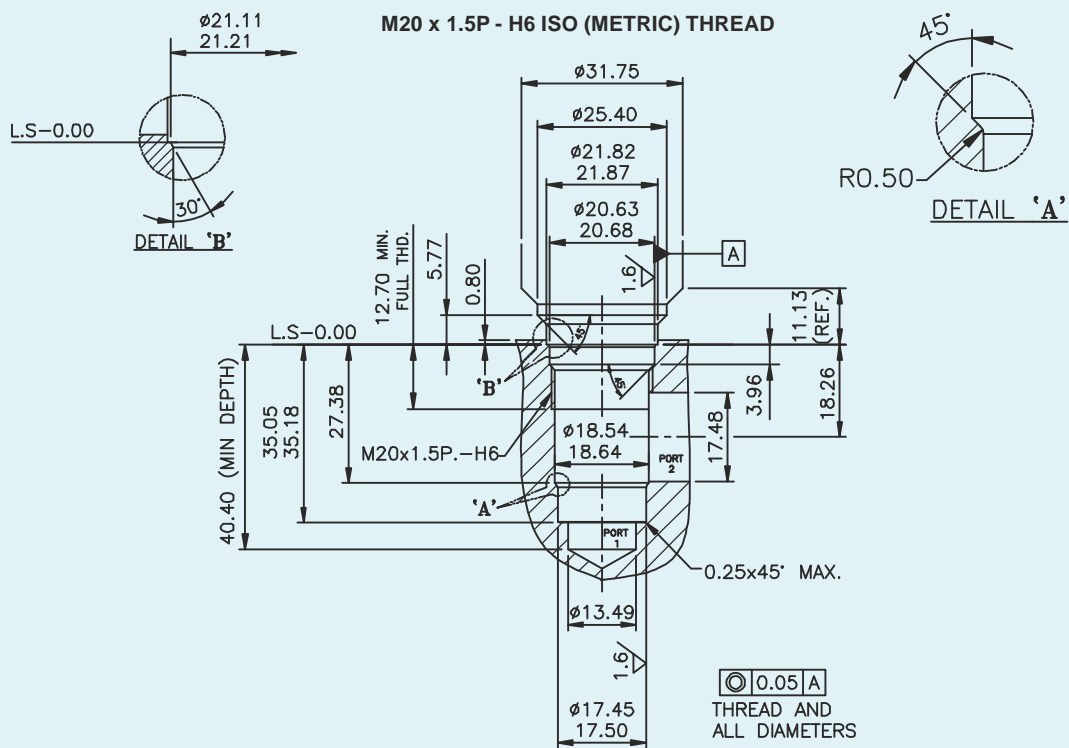


NOTE :- DEGREE 30° & 45° SHOULD BE SMOOTH & FREE OF NICKS AND SHARP EDGES.

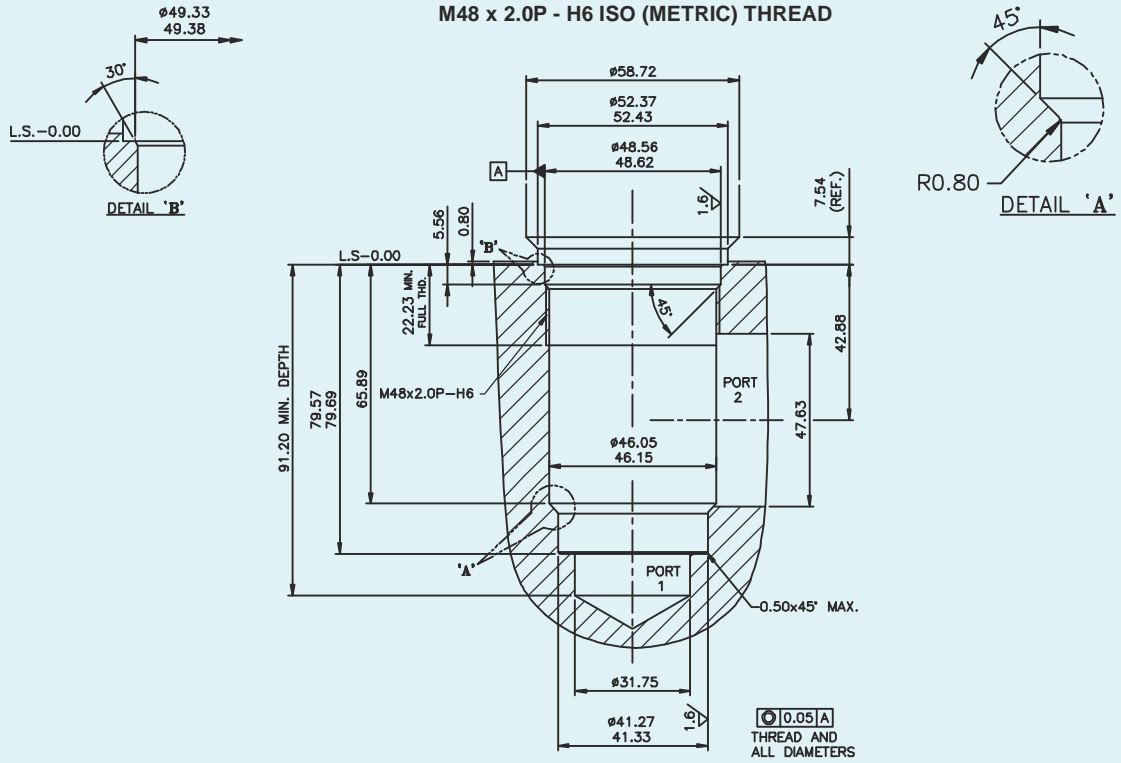
## CV-228 CAVITY DETAIL



## CV-229 CAVITY DETAIL

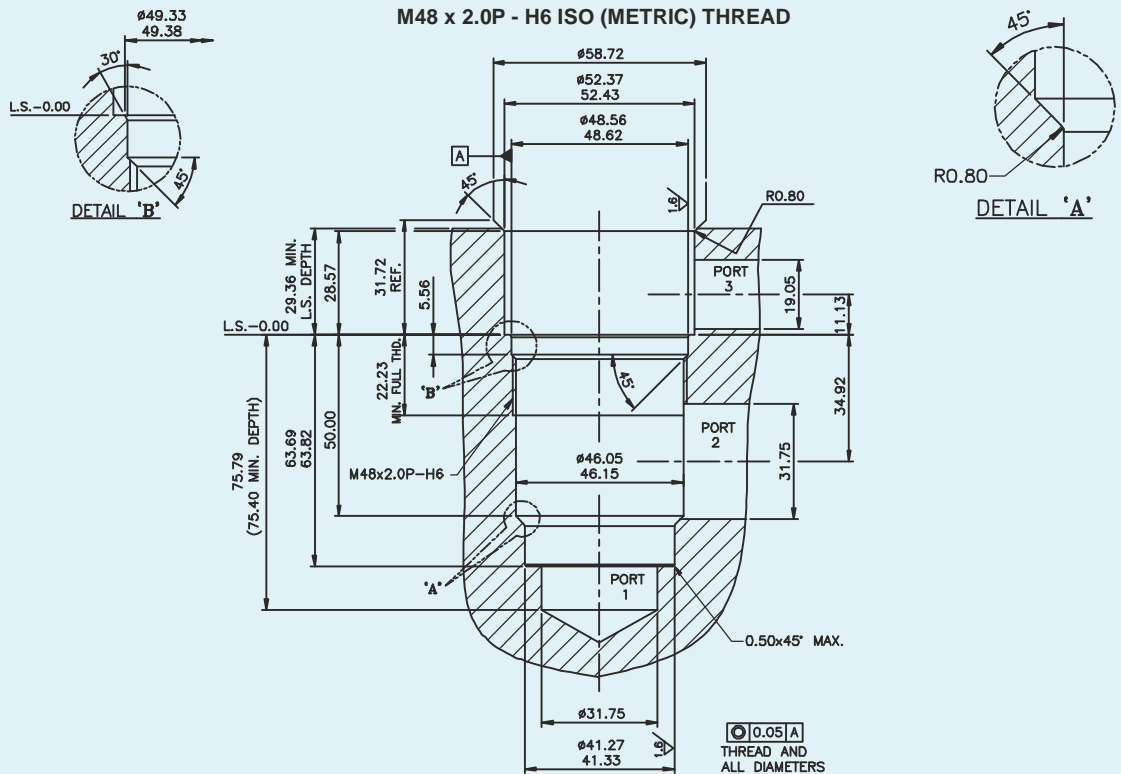


## CV-230 CAVITY DETAIL



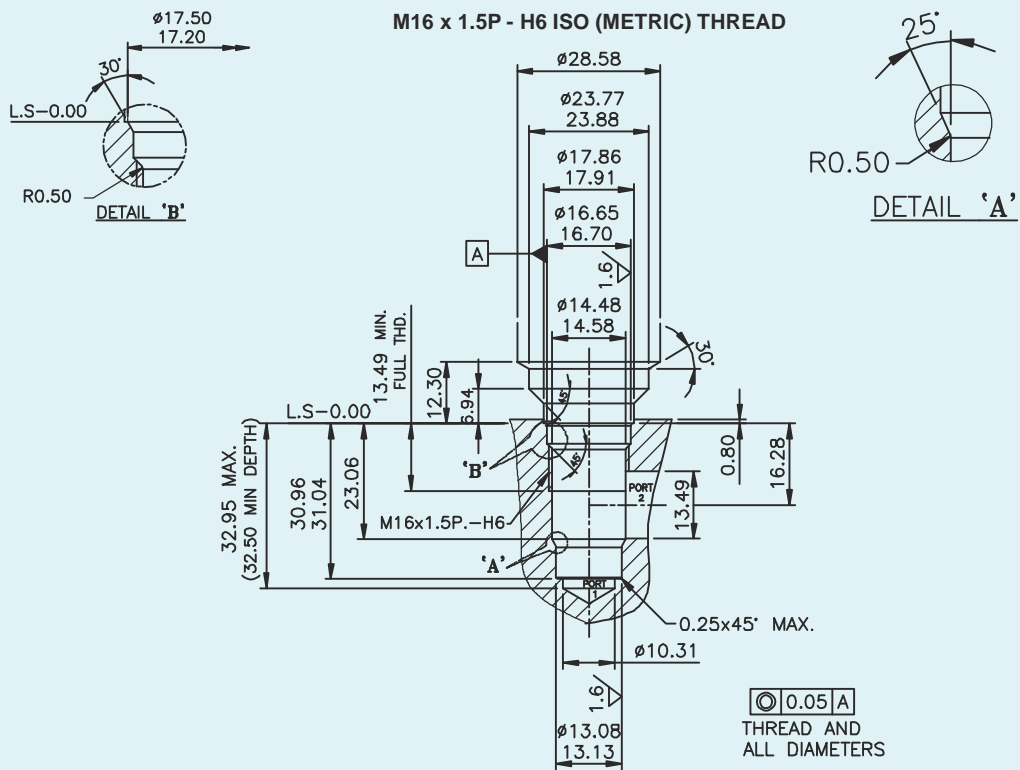
NOTE :- DEGREE 30° & 45° SHOULD BE SMOOTH & FREE OF NICKS AND SHARP EDGES.

## CV-231 CAVITY DETAIL



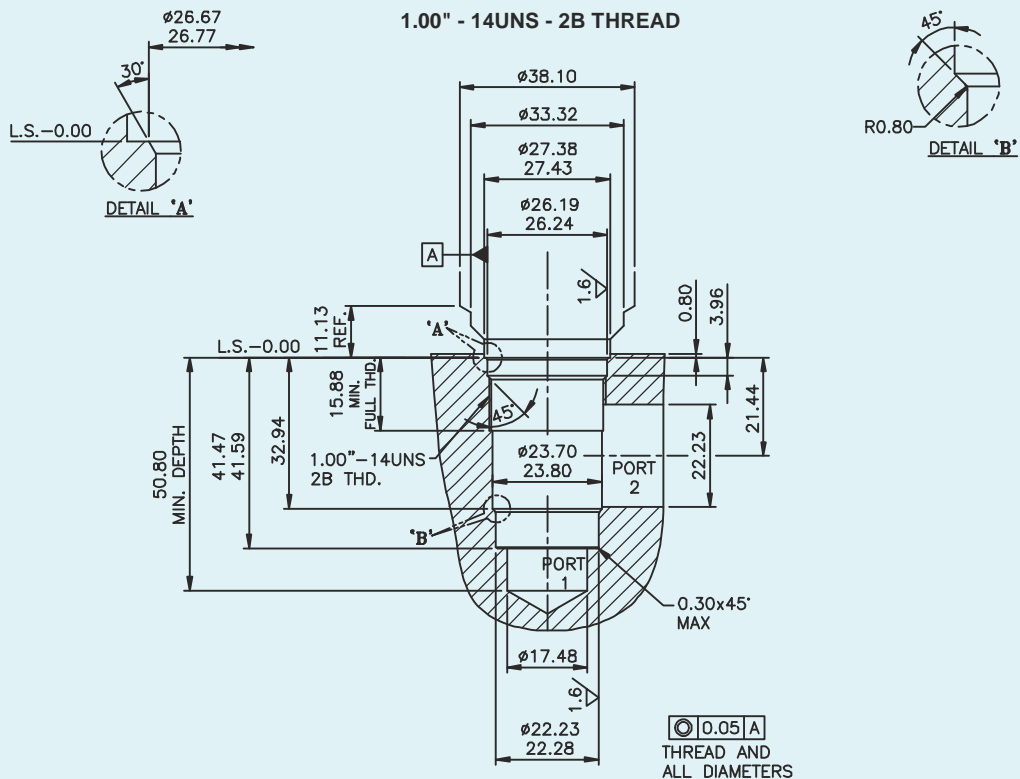
NOTE :- DEGREE 30° & 45° SHOULD BE SMOOTH & FREE OF NICKS AND SHARP EDGES.

## CV-232 CAVITY DETAIL



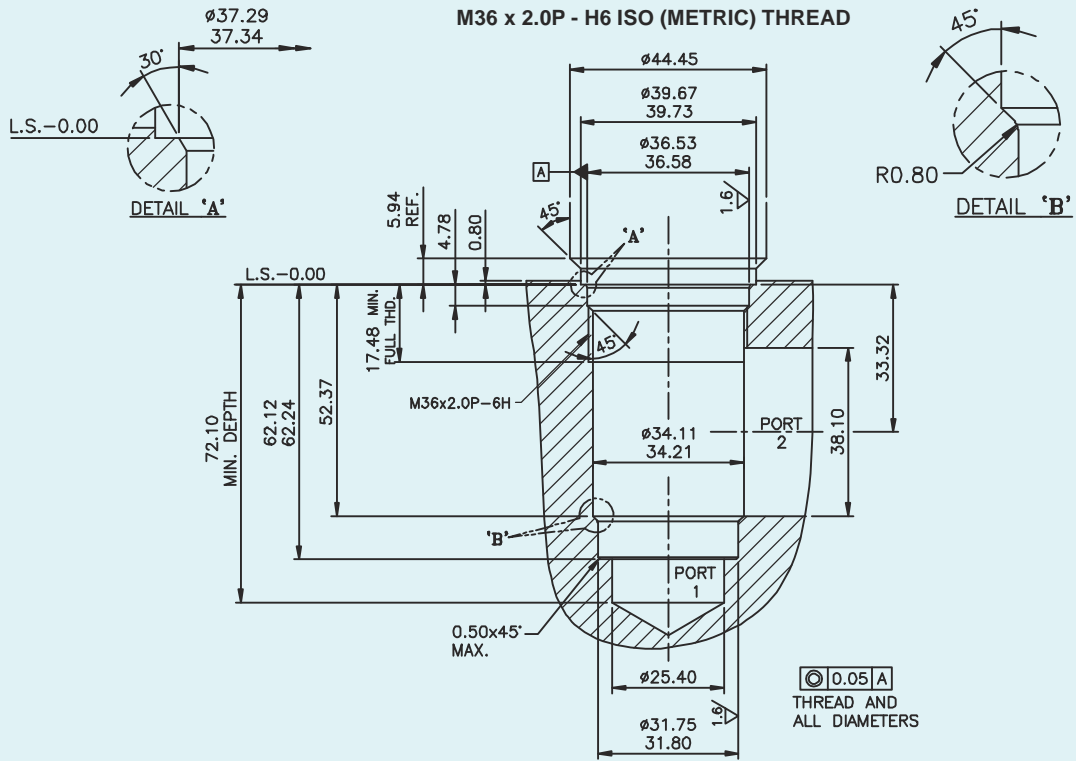
NOTE :- DEGREE 30° & 45° SHOULD BE SMOOTH & FREE OF NICKS AND SHARP EDGES.

## CV-270 CAVITY DETAIL

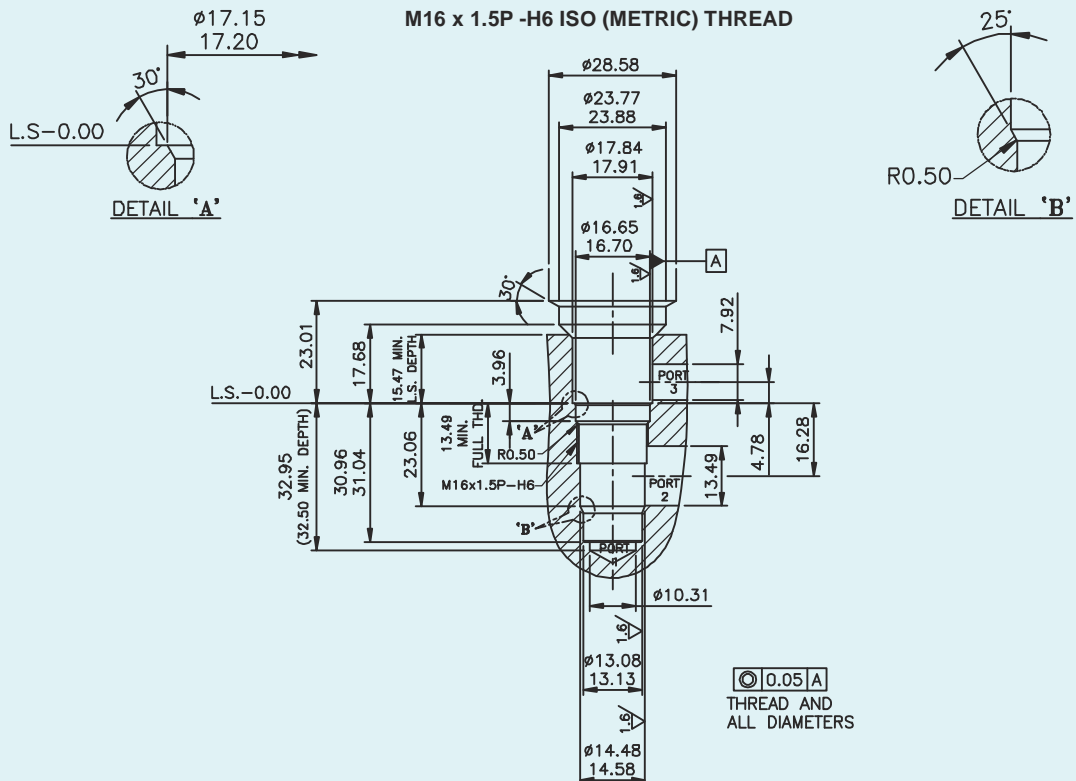


NOTE :- DEGREE 30° & 45° SHOULD BE SMOOTH & FREE OF NICKS AND SHARP EDGES.

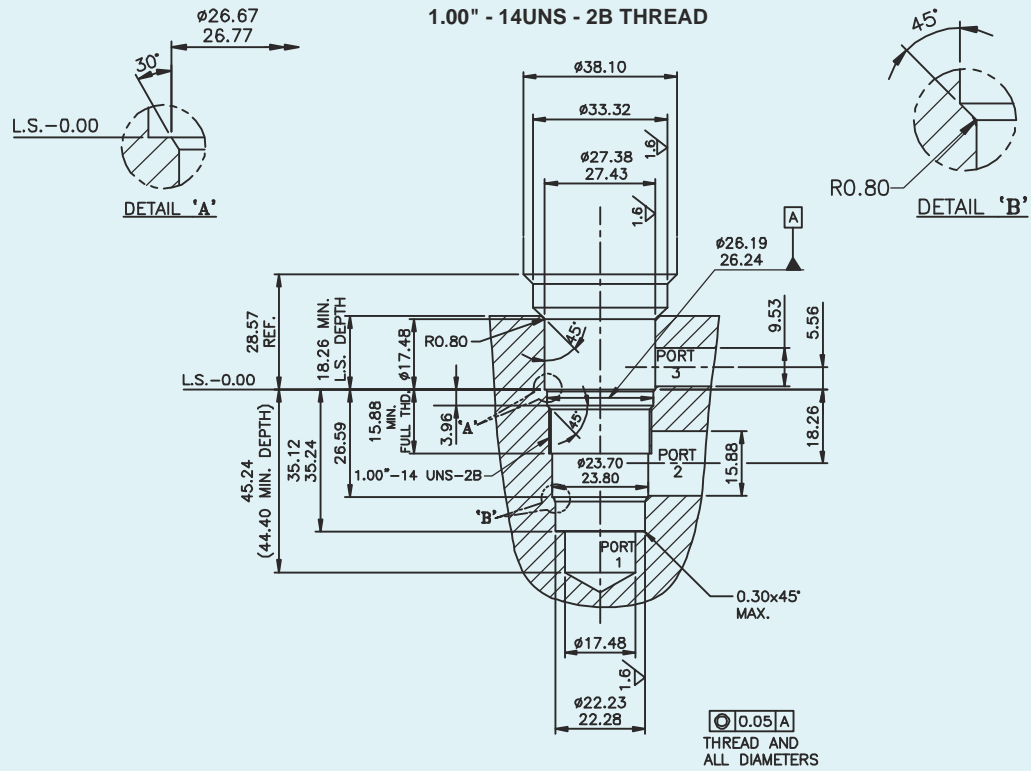
## CV-271 CAVITY DETAIL



## CV-272 CAVITY DETAIL

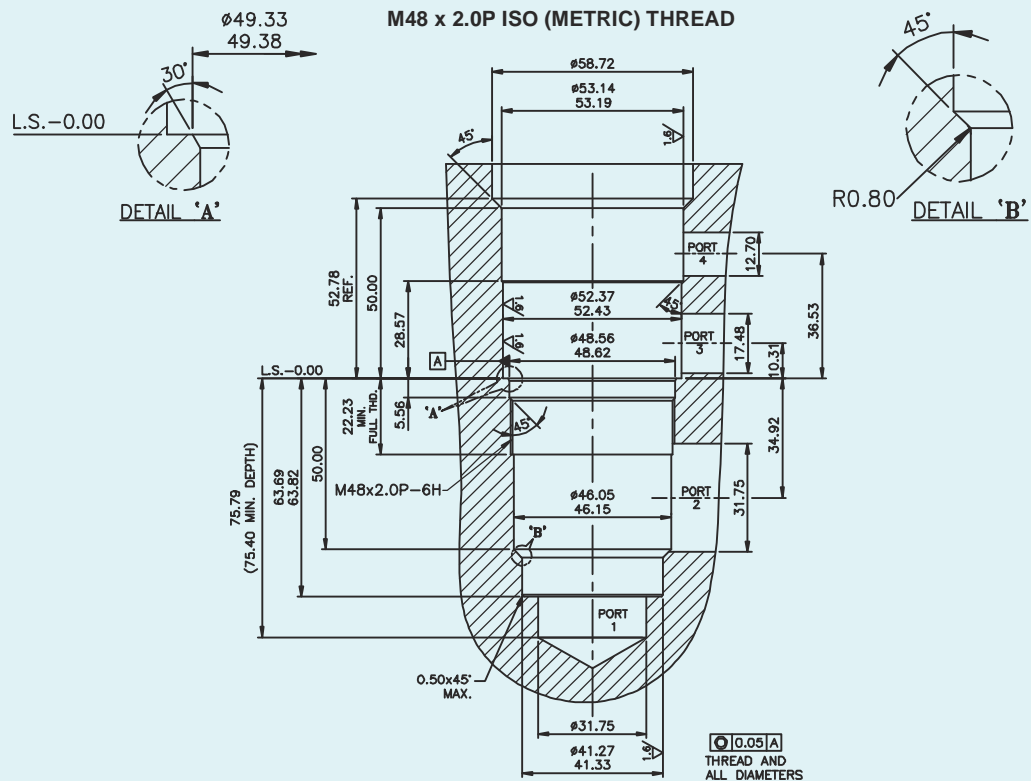


## CV-273 CAVITY DETAIL



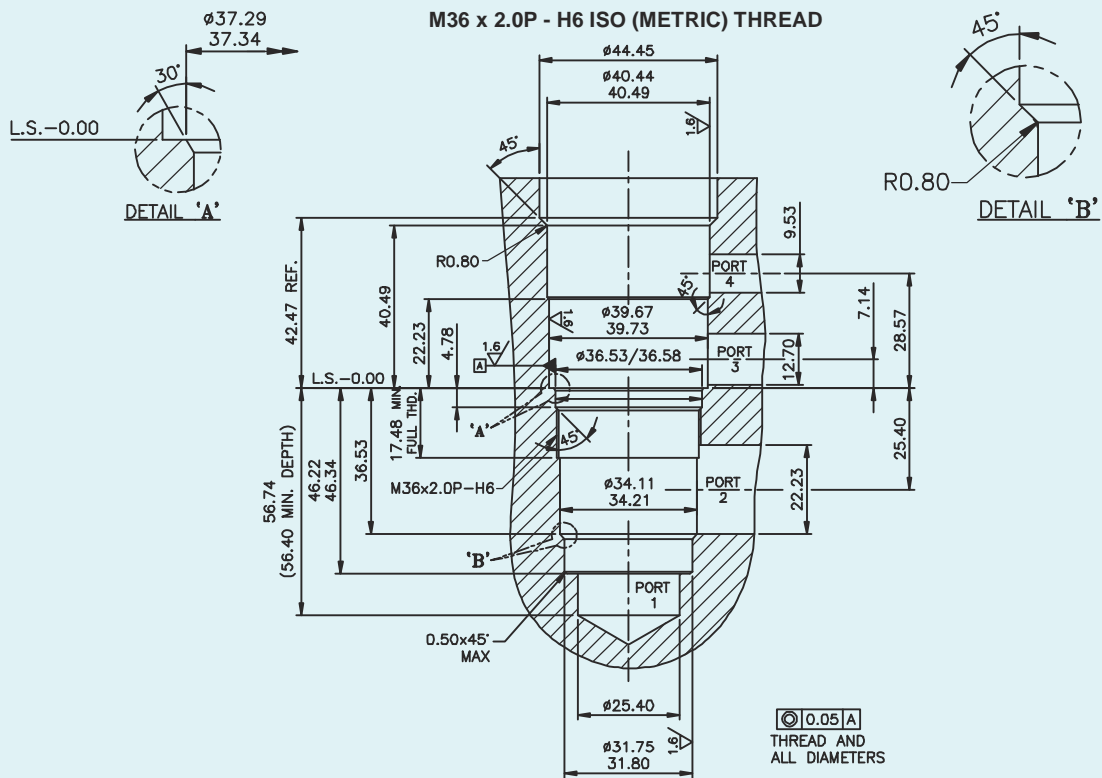
NOTE :- DEGREE 30° & 45° SHOULD BE SMOOTH & FREE OF NICKS AND SHARP EDGES.

## CV-275 CAVITY DETAIL



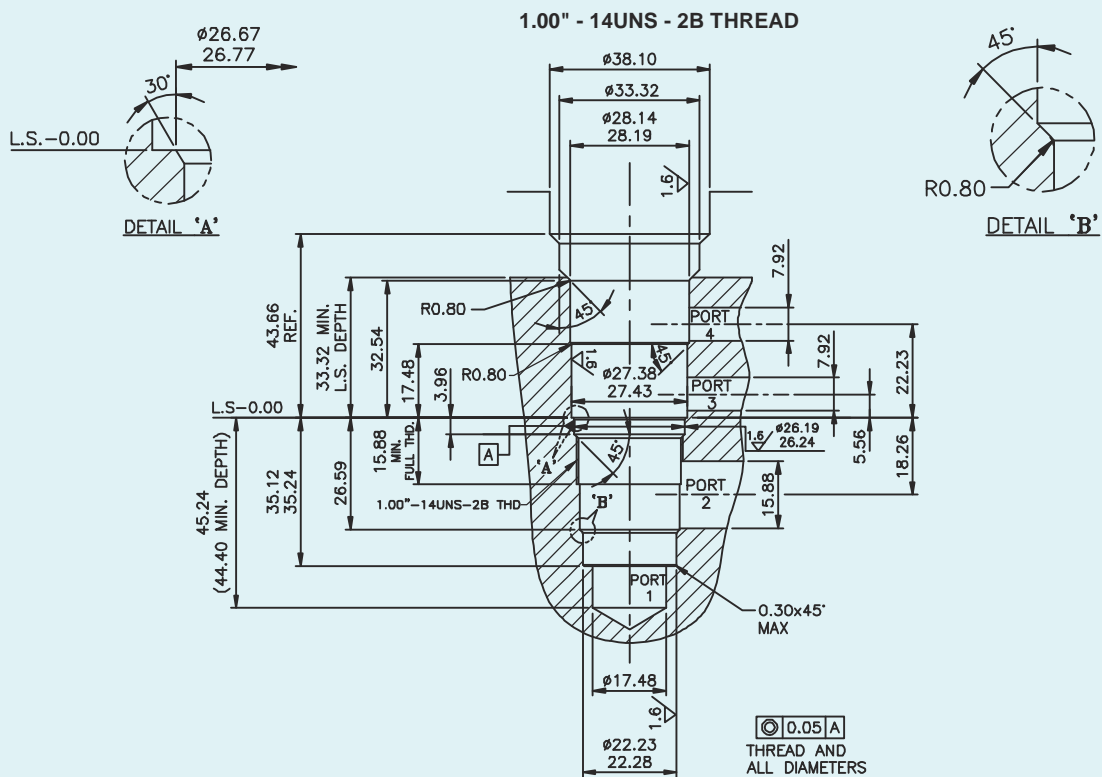
NOTE :- DEGREE 30° & 45° SHOULD BE SMOOTH & FREE OF NICKS AND SHARP EDGES.

### CV-276 CAVITY DETAIL



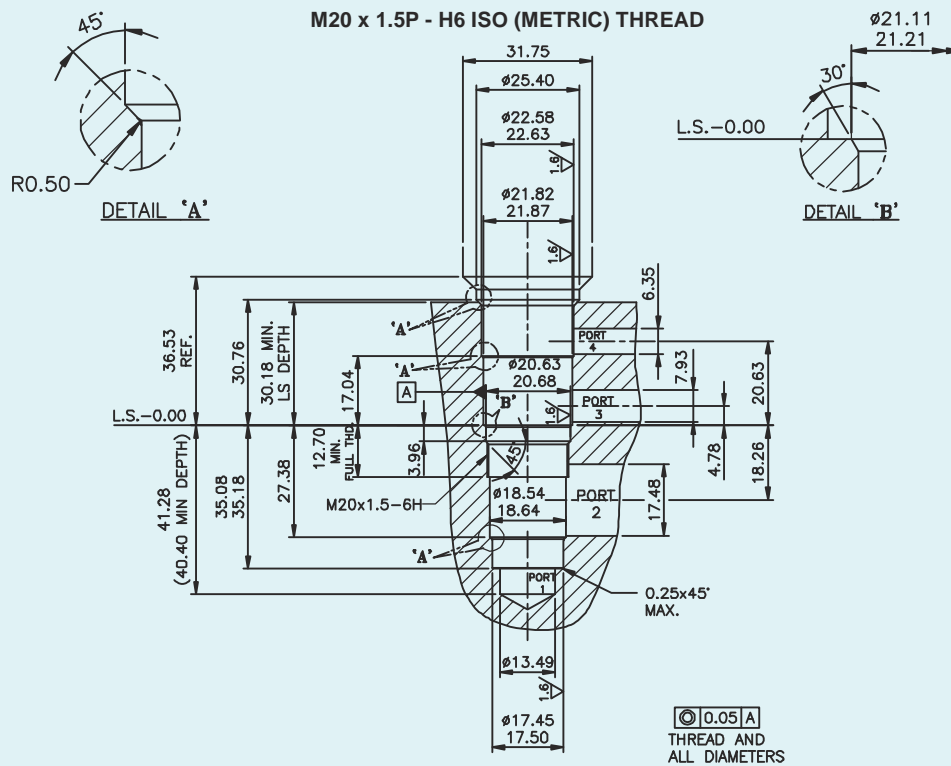
NOTE :- DEGREE 30° & 45° SHOULD BE SMOOTH & FREE OF NICKS AND SHARP EDGES.

### CV-277 CAVITY DETAIL



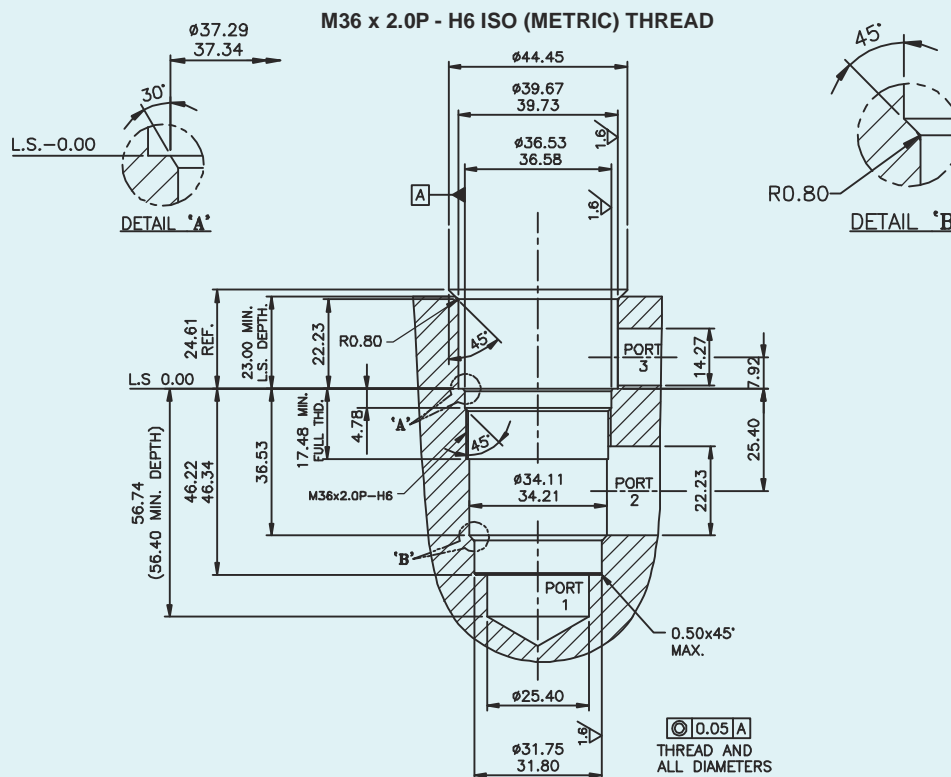
NOTE :- DEGREE 30° & 45° SHOULD BE SMOOTH & FREE OF NICKS AND SHARP EDGES.

### CV-278 CAVITY DETAIL



NOTE :- DEGREE 30° & 45° SHOULD BE SMOOTH & FREE OF NICKS AND SHARP EDGES.

### CV-283 CAVITY DETAIL



NOTE :- DEGREE 30° & 45° SHOULD BE SMOOTH & FREE OF NICKS AND SHARP EDGES.